

# JAQUES

DESIGNED & BUILT TO LAST

## CASE STUDY



High Specification Steel Frame Building – Hampshire

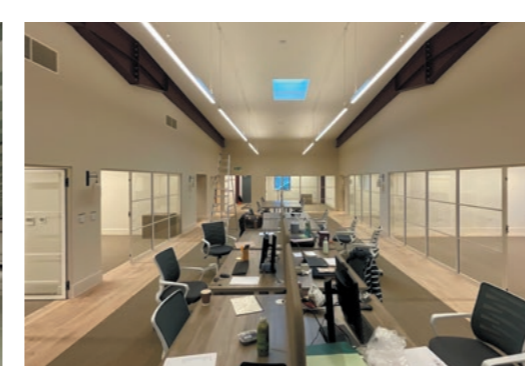


Steel portal framed building 72m long x 27m wide x 4m high. Structural steel work coated in a non-standard Wine Red (RAL 005) and high specification aluminium glazing powder coated in Olive Drab Matt (RAL 6022) as specified by the client.

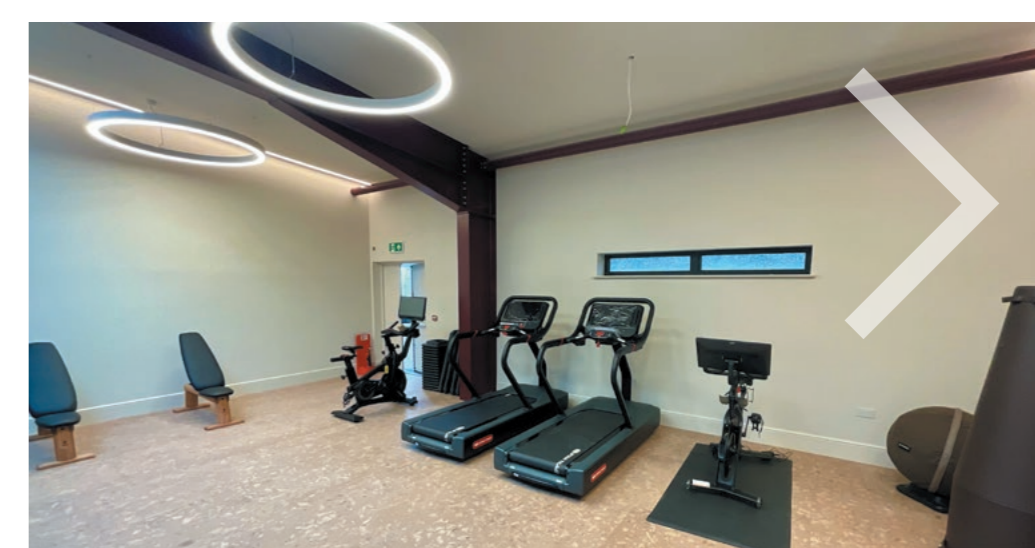


The building comprises above standard 150mm thick Kingspan QuadCore® KS1000QCK Karrier Panel in Basalt Grey, with additional reverse profile Plastisol single skin cover sheet in Merlin Grey, and 150mm Kingspan QuadCore® KS1000RW Roof Panels in Goosewing Grey. High levels of insulation make for an energy efficient building, with an extensive Solar PV array on the roof and renewable heating in the form of a biomass boiler.





Completed in December 2024, the project embodied the client's vision to create a members' clubhouse, with thoughtfully crafted private offices and workspaces, relaxed dining and bar settings, versatile event spaces, a fully equipped gym, an airy exercise studio and 3 treatment rooms.



Reflecting on the project, Jo Butler said:

**“Jaques came recommended and their team were a pleasure to have on the build. We would look no further than them for any future buildings on the farm.”**



Scan here to read more

Contact us today:  
T. 01568 708644  
E. sales@jaquesint.com  
W. www.jaquesint.com

f @ in X jaquesint

**JAQUES**  
DESIGNED & BUILT TO LAST